

C-Type Device Manual



Find out more about the C-Type.



Introduction



Device Components



Mount and Activate Device



Unmount and Deactivate Device



Take the Device Out of Use



C-Type Technical Details

Introduction

1

The SL7 is a real-time **tracking** device.

2

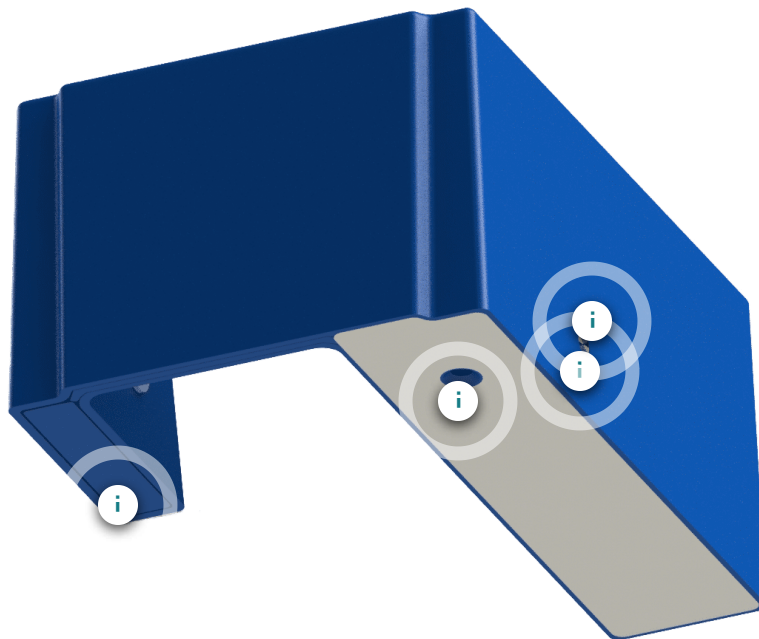
The SL7 is purchased as **one-way** device.

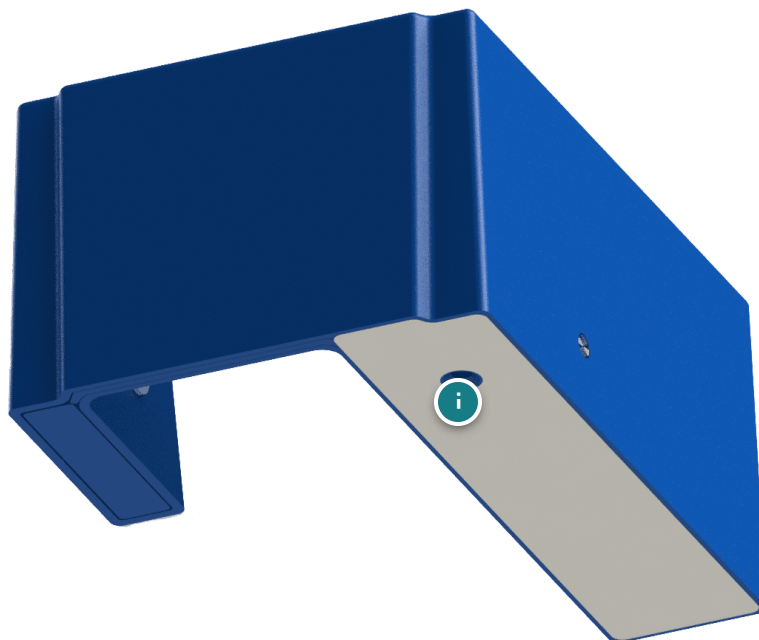
3

The SL7 can be used for ocean, rail and land transports. The device is **suitable for tracking dry containers with increased security requirements**. The SL7 has the perfect design for container doors (GPS antenna on the outside of the container door for accurate tracking) and is equipped with a strong battery.

Device Components

Check out all C-Type components on the graphic below:





ON/OFF Button

C-Type self-activation:

After the C-Type has been properly installed on the container door, the device will self-activate after one minute. **The ON/OFF button is not necessarily needed to switch the device on.**

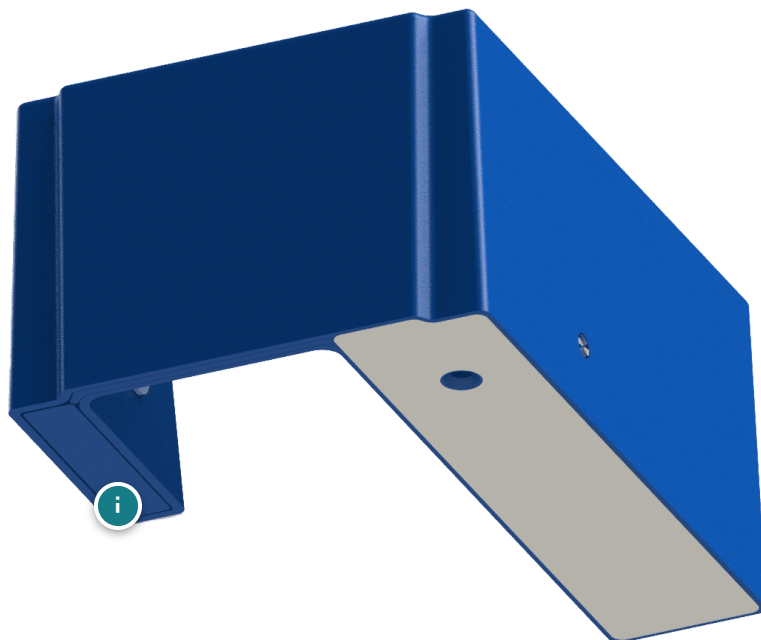
If you want to use the button:

Turn ON

Press the button briefly.

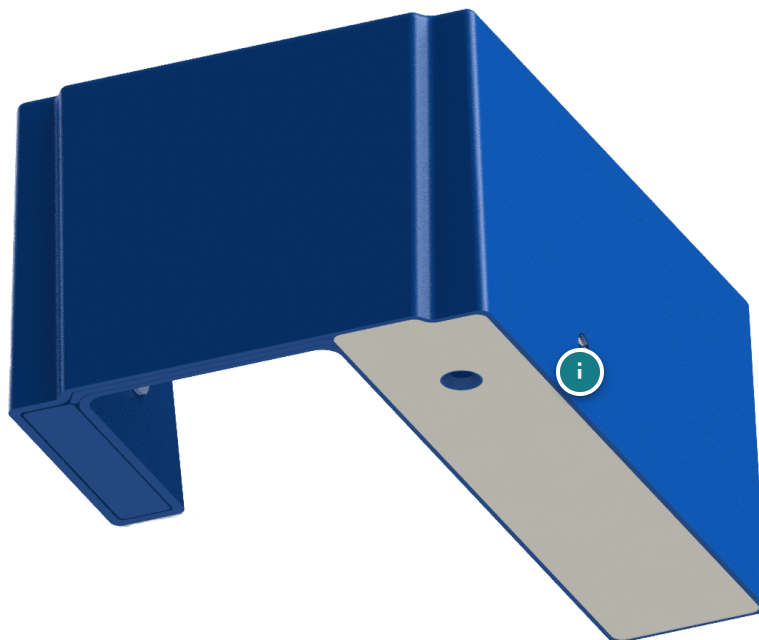
Turn OFF

Press and hold the button until the LED shows red light (5-6 seconds). The red light will be shown for several seconds and will then switch off.



External part

This part must be located on the outside of the container.



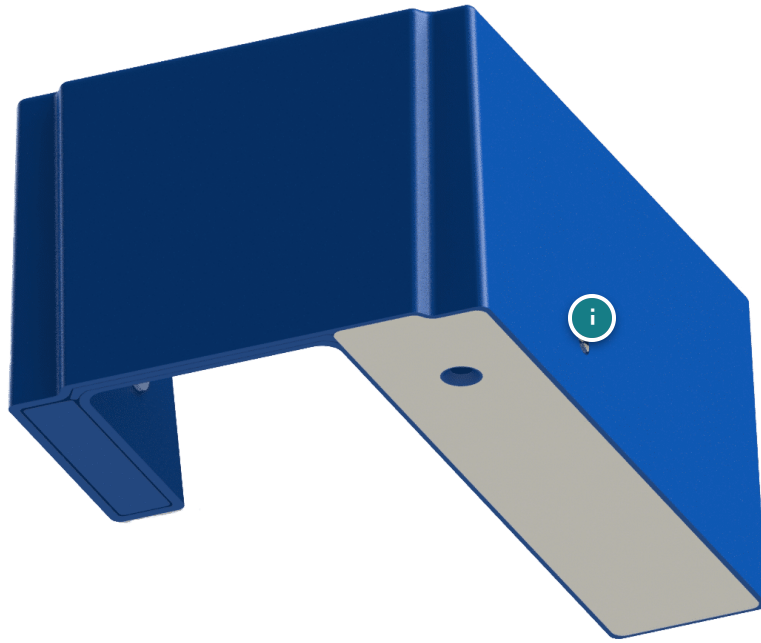
Status LED

Green light:

While the device is on the LED slowly flashes in green color

Red light:

When the device is turned off, the LED shows a red light for a few seconds and then switches off.



Sensors

- Temperature
- Shock / Impact
- Tilt
- Light sensor

Mount and Activate Device



1. Mount device

Place the C-Type on the left door of the container, so that the external part (the thinner part) is on

the outside of the of the container and internal part (the part showing the LED) is on the inside of the container. Magnets will keep the device in place.

2. Activation

After the C-Type has been properly installed on the container door, the device will self-activate after one minute. There is no need to use the ON/OFF button to switch the device on.

Check that the LED slowly flashes in green: this indicates that the device is activated.

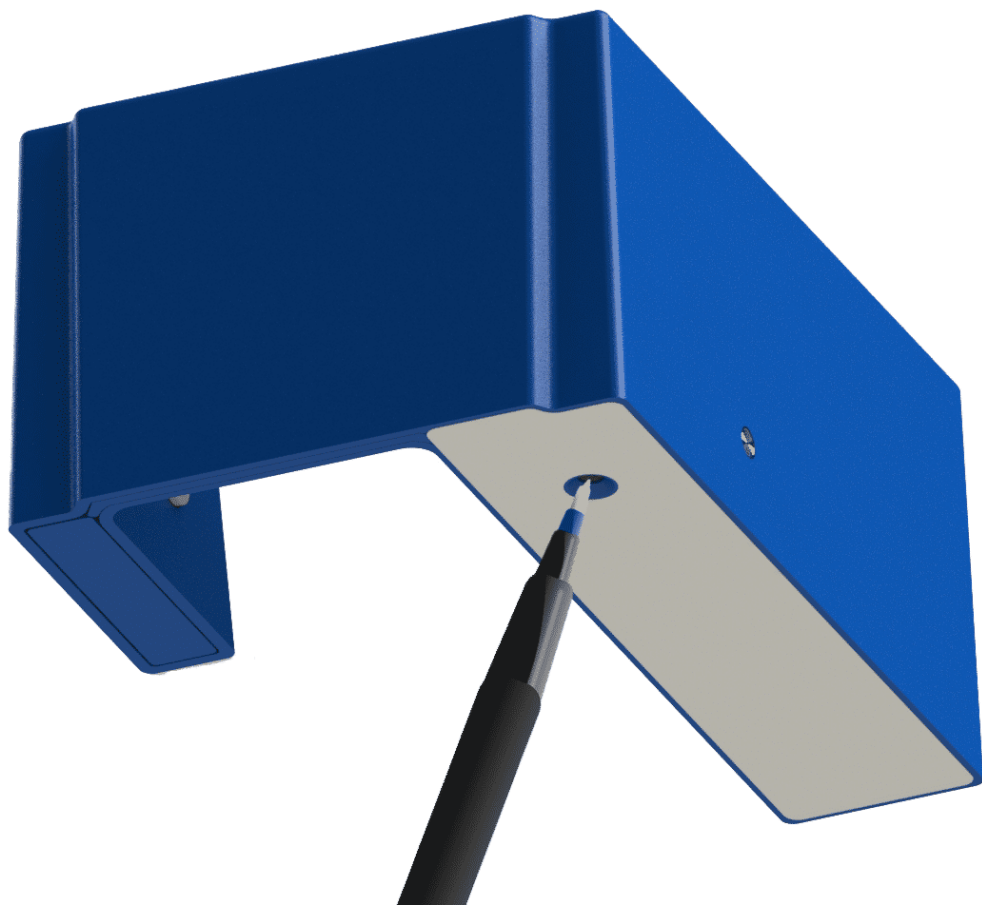
Unmount and Deactivate Device

1

Remove device from its mounting position.

2

Press the ON/OFF button until the LED shows a red light for a few seconds. The device will now be switched off.



Take the Device Out of Use

The battery of the C-Type **cannot be replaced or charged.**

When the battery has run out, the C-Type must be disposed of properly. Follow the rules of your country for electronic waste.

C-Type Technical Details

Sensors	<ul style="list-style-type: none">• Temperature:<ul style="list-style-type: none">- Operating range: -30°C to +65°C- Accuracy:<ul style="list-style-type: none">±0.3 °C (25 °C to 45 °C)±1.0 °C (0 °C to 65 °C)±2.0 °C (-30 °C to 65 °C)• Humidity<ul style="list-style-type: none">- Accuracy: ±2 % of relative humidity• Shock<ul style="list-style-type: none">- 3-dimensional shock detection up to 14 g• Vibration<ul style="list-style-type: none">- Accuracy: 0,4 g2/Hz from 0 to 4,4 g2/Hz• Tilt<ul style="list-style-type: none">- Accuracy: 1° (0° to 180°, measured relatively to a horizontal position)• Light
Battery & Charging	<ul style="list-style-type: none">• 5000 mAh Li-Pol non rechargeable• battery lasts 24 days with a communication frequency of 1 hour (modifiable)
Transmission Type	<ul style="list-style-type: none">• GPRS/EDGE, LTE Cat-M

Dimensions & Weight	<ul style="list-style-type: none">• 135 x 98 x 65 mm• 270g
IP Rating	<ul style="list-style-type: none">• 65
Certifications	<ul style="list-style-type: none">• UN38.3• CE• MSDS• RoHs